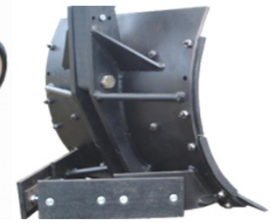




NEW! 9400-Series In-Furrow Plows



6306 On-Land Plow



Plow Bottom Detail

9400 IN-FURROW PLOW	Stock No	Weight	List
4-Bottom 18", shear bolt, 7"x7"x.5" main frame, adjustable rear gauge wheel, new swing cylinder lock mechanism, steel wing covers, heat treated points, steel landsides, for 100-140 hp minimum	9404		\$16,263
3-Bottom 18", (9404 less 1 BTM1), for 75-105 hp minimum	9403		\$13,477
5-Bottom 18", (9404 plus 1 BTM1 and 1 BEAM2), for 125-175 hp min	9405		\$18,816
Extra bottom kit, bolts to plow beam, steel wing covers, heat treated points, steel landsides	BTM1		\$2,400
Extra beam extension, 2-foot, with bolts/nuts	BEAM2		\$150

6300 ON-LAND PLOW	Stock No	Weight	List
6-Bottom 18", shear bolt, 7"x7"x.5" main frame, front & rear gauge wheels, steel wing covers, heat treated points, steel landsides, for 150-210 hp minimum	6306		\$28,053
5-Bottom 18", (6306 less 1 BTM1), for 125-175 hp minimum	6305		\$25,447
7-Bottom 18", (6306 plus 1 BTM1 and 1 BEAM2), for 175-245 hp minimum	6307		\$30,658
8-Bottom 18", (6306 plus 2 BTM1 and 2 BEAM2 and valve kit), for 200-280 hp minimum	6308		\$35,263
Bottom kit, bolts to plow beam, steel wing covers, heat treated points, steel landsides	BTM1		\$2,400
Beam extension, 2-foot, with bolts/nuts	BEAM2		\$150
Switch rake, angled bar harrow to level soil, for 6305,6306	6390-56		\$8,950
Switch rake, angled bar harrow to level soil, for 6307,6308	BEAM2		\$9,150

PLOW OPTIONS	Stock No	Weight	List
UHMW polyethylene wing covers, for sticky soils, DEDUCT per bottom			(\$100)
Hard-surface points, ADD per bottom			\$100

**BENEFITS WITH HARRELL PLOWS**

- Plows are mostly pre-assembled.
- All models can add or delete bottoms for future conditions and higher resale value.
- All models use the same bottoms, beam extensions and tailwheels, for easy parts stocking.
- All models have easy-adjust tailwheels
- All wear parts interchange with the original Harrell and LMC plows, for parts sales opportunities.



FREIGHT, FOB Logan UT. Delivery for one plow is \$1.50/mile from Logan UT 84321. Discount for multiple plows - call. ASSEMBLY, by dealer: 9400 plow 1 hour (install tailwheel); 6300 plow 4 hours (attach main beam to frame, install tailwheel). All orders are also subject to the dealer Sales & Security Agreement, our latest Discounts and Terms, and credit approval.